

## ***Strategic Planning Guidance 2008 - 2013***

### **Pi Lambda Lambda Chapter - Omega Psi Phi Fraternity, Inc.**

The basis of this Retreat can be found in [Proverbs 18:24](#) - A man of many companions may come to ruin, but there is a **friend** who sticks **closer than a brother**. Our chapter and our fraternity are deeply rooted in concepts of friendship and fellowship.

#### **PLL Annual Gene Bryson Retreat Charter and Way Ahead:**

- 1) Strategic Planning Committee (need a chairman) meets to link and de-conflict the various committee models to the chapter activity model
- 2) Committees continue to refine their activity models and build budget estimates
- 3) Strategic Planning Committee brief back five year plan for approval to the Chapter no later October meeting
- 4) New Basileus develop his vision and calendar for 2009-2010 linked to Strategic Plan, NLT than Nov meeting

#### **1. References:**

- a. Omega Psi Phi Fraternity Incorporated Strategic Plan and Grand Basileus Vision (none published)
- b. Third District, Omega Psi Phi Incorporated Strategic Plan and District Representative Vision (none published)
- c. Pi Lambda Lambda Strategic Planning Guidance; 2004-2009

2. **Purpose:** The PLL SPG addresses the five year vision for the chapter and establishes the framework to focus the fellowship and business practices in PLL during that time frame.

3. **Scope:** The PLL SPG applies to the selection, planning and execution of all PLL activities and, accordingly, each chapter member should appropriately refer to the PLL SPG.

4. **Timeframe:** To facilitate near term planning and make progressive refinements to long term plans the annual assessment should be complete no later than the close of each of Omega Year. This will provide newly elected chapter officers a basis upon which to develop specific guidance for the new Omega Year. The first PLL SPG will cover Omega year 2009 thru 2014. Succeeding five-year periods will be called Omega Five Year Planning Periods (OFYPP).

***Strategic Planning Guidance 2008 - 2013***  
**Pi Lambda Lambda Chapter - Omega Psi Phi Fraternity, Inc.**

5. **Validation:** *The PLL SPG must be approved by a chapter vote.*

6. **Responsibilities:**

a. **Basileus.**

(1) The Chapter Basileus will direct the annual review and assessment of the PLL SPG and when required, direct necessary updates.

(2) Will publish a yearly vision statement at the first meeting in which his staff conducts chapter business. The vision statement must support the Chapter's Five Year Vision and appropriately advance the tenets of the PLL SPG.

b. **Vice Basileus.** The Vice Basileus will ensure the Strategic Planning Committee regularly conducts comprehensive and professional reviews/assessments of the SPG.

c. **Strategic Planning Committee.** Under the supervision of the committee chair will:

(1) Develop the PLL SPG addressing the five year chapter vision.

(2) Ensure the PLL SPG is synchronized with district and international guidance.

(3) Ensure the PLL SPG is sufficiently collaborated with appropriate chapter committees

(4) Conduct the annual assessment of the PLL SPG.

(5) As appropriate, present the PLL SPG or annual assessment to the chapter for review and approval

d. **Chapter Committee Chairs.** To facilitate the development of a comprehensive and collaborative SPG each chapter committee chair participate in SPG planning/review sessions and provide input as requested by the PLL SPG committee chair.

e. **Chapter Members.** Review, comment, and vote on the PLL SPG.

***Strategic Planning Guidance 2008 - 2013***  
**Pi Lambda Lambda Chapter - Omega Psi Phi Fraternity, Inc.**

**8. Strategic Planning Guidance.**

**a. Goals and Objectives**

(1) The overarching chapter goal for the this five year period is to Attain a Level of Formidable Influence at the District level by 2014 while simultaneously meeting the needs of the Brotherhood. In addition related chapter goals are: Each One Know All and All Know Each; Our Christian Foundation Shall Order Our Steps; and Serving to Serve Omega. To achieve these goals we have the following objectives for 2009:

(2) Objectives by year:

- Omega Year 2009 - 2010:
  - International Social Action Chapter of the Year Omega Year 2009-2010
  - Award one chapter scholarship recipient four year tuition in 2009
  - Chapter representation in key district committees in 2009
  - Maintain a **XX%** retention rate over a 5 year period
  - Meet district/international reclamation objectives yearly
- Omega Year 2010 - 2011: **TBD**
- Omega Year 2011 - 2012: **TBD**
- Omega Year 2012 - 2013: **TBD**
- Omega Year 2013 - 2014: **TBD**

**b. Mandated Programs.** See the appropriate appendices, which prescribe the framework for the key activities related to how chapter committees will implement the OFYPP.

**d. Chapter Fellowship.** Men of like ideals and attainment bonded in friendship in the cornerstone of all that we do in keeping with the mandates of the Omega Psi Phi Fraternity, Incorporated. Inherent to this fellowship is the pursuit of maintaining the friendship as our first priority. To that end the chapter will ensure its portfolio of programs and activities includes specific efforts focused on fellowship. The Brotherhood Committee will be the responsible proponent for developing programs and activities that support chapter fellowship.

***Strategic Planning Guidance 2008 - 2013***  
**Pi Lambda Lambda Chapter - Omega Psi Phi Fraternity, Inc.**

- e. **Chapter Programs.** TBD (programs developed to meet specific chapter objectives)

**9. Chapter Vision**

a. This vision is derived from our Fraternal obligations and the membership's collective views as depicted in the results of the 2008 chapter survey. It prescribes the framework upon which we plan and execute the business of our Fraternal obligations. As such it serves as the guidepost for our Fraternal interaction and in our service to the communities in which we reside.

b. In honor of the principles upon which our Fraternal bond was established and sustained the premise upon which this chapter shall operate for the next five years is that our work and existence be a living example of true brotherhood, harnessed to serve Christianity, our families, and our communities.

c. Pi Lambda Lambda will continue to be a chapter that represents true friendship and a brotherly bond that extends beyond chapter meetings and special events. Pi Lambda Lambda will be a chapter where brothers truly know each other, celebrate life together, and in which Friendship is Essential to the Soul is a reality. ***Each One Know All and All Know Each.***

Omega's roots are steeped in the Living Gospel of God's Word. Lest we forget that, we will conduct the business of Pi Lambda Lambda in such a manner that our actions are pleasing in the eyes of our Savior and worthy of the great sacrifice He made for us. Our founding fathers, whose number included two clergy, Bishop Edgar Love and Bishop Oscar Cooper, would be none to happy to know that we have not forsaken our Christian foundation. No worthy Omega should be ashamed of being affiliated with our chapter.

d. Pi Lambda Lambda. ***Our Christian foundation shall order our steps.***

e. Service is a key tenet of our Fraternal being and in our pursuit of Fraternal excellence we will earnestly conduct the business of service so that we may proudly represent our Dear Omega. Never forgetting our obligations to our brotherhood, our families and our communities, we will always professionally plan and execute the Fraternity's mandated programs, ever looking forward for ways to vastly improve. To that end we will continue our successful achievement in Social

***Strategic Planning Guidance 2008 - 2013***  
**Pi Lambda Lambda Chapter - Omega Psi Phi Fraternity, Inc.**

Action through community efforts such as the Charles Drew Blood Drive, The Relay for Life, Step Out For

f. Diabetes, etc. *Serving to Serve Omega.*

In this, our second phase of strategic development we will continue to: (1) accomplishing those mandates directed to us by the International and District headquarters; (2) refine chapter operations; and (3) focus on the Fraternal health of the brotherhood with an emphasis on retention and reclamation. To that end the chapter will:

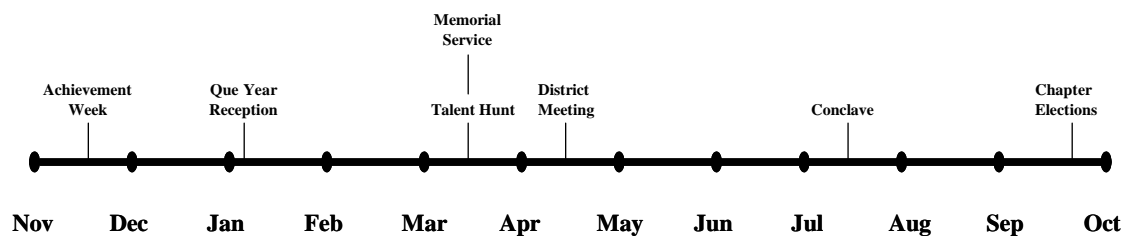
(1) Continue to plan and execute actions required to fulfill our obligation to International Headquarters and the 3<sup>rd</sup> District.

(2) Routinely assess our capabilities so that we can evolve our operations to keep pace with changes in our environment. Pi Lambda Lambda's existence will not be characterized by one or two year increments based on the sitting leadership. On the contrary, Pi Lambda Lambda operations and programs will be the result of a synergistic approach to doing business linked by planned actions, specified time lines that support an agreed upon end state. To that end, as our Fraternal existence is built on the legacy of our Founding Fathers, it is our responsibility to create a legacy of excellence that will benefit future members of Pi Lambda Lambda.

(3) "Behold, how good and how pleasant [it is] for brethren to dwell together in unity!..." Our unity is spiritually required. Our brotherly bond mandates an obligation of each to the other. Therefore we will remain focused on the positives we individually bring to our fellowship; through our actions we will validate our Fraternal motto; recognize each brother as a valued member of the chapter; and ensure we do all that is right to retain every brother. This approach will also assist us in reclaiming brothers who were inactive for numerous reasons. Hold strong to the legacy left us by our Founding Fathers, apply the excellence our combined professional experiences and we will fulfill the responsibilities of our Fraternal bond.

***Strategic Planning Guidance 2008 - 2013***  
**Pi Lambda Lambda Chapter - Omega Psi Phi Fraternity, Inc.**  
**Appendix A**

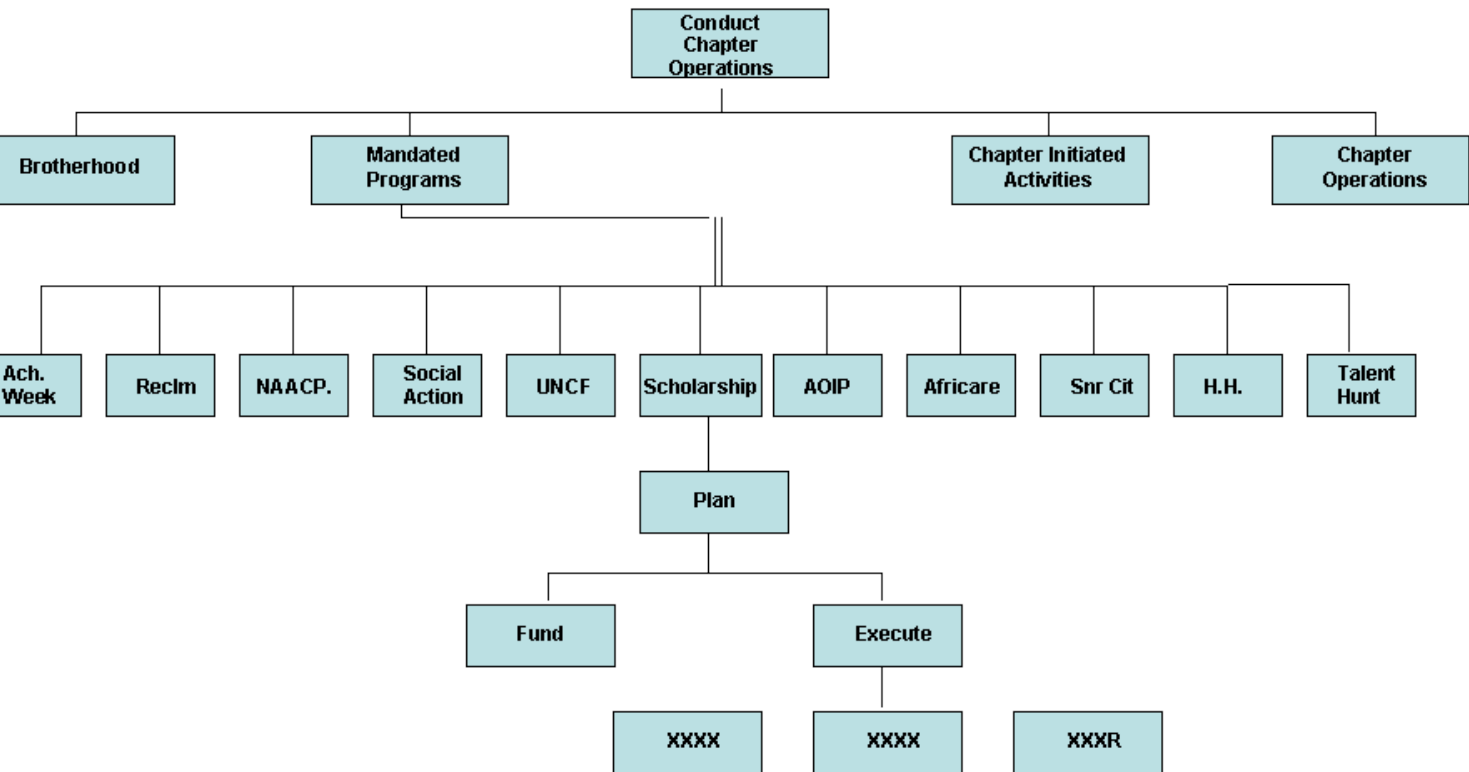
***Omega Year 2009 to 2010***



This appendix depicts the list of events that will occur in a given year. As the Strategic Plan matures the events covered will reflect synergy with the OFYPP.

**Appendix B**

***Chapter Activity Model (evolving)***

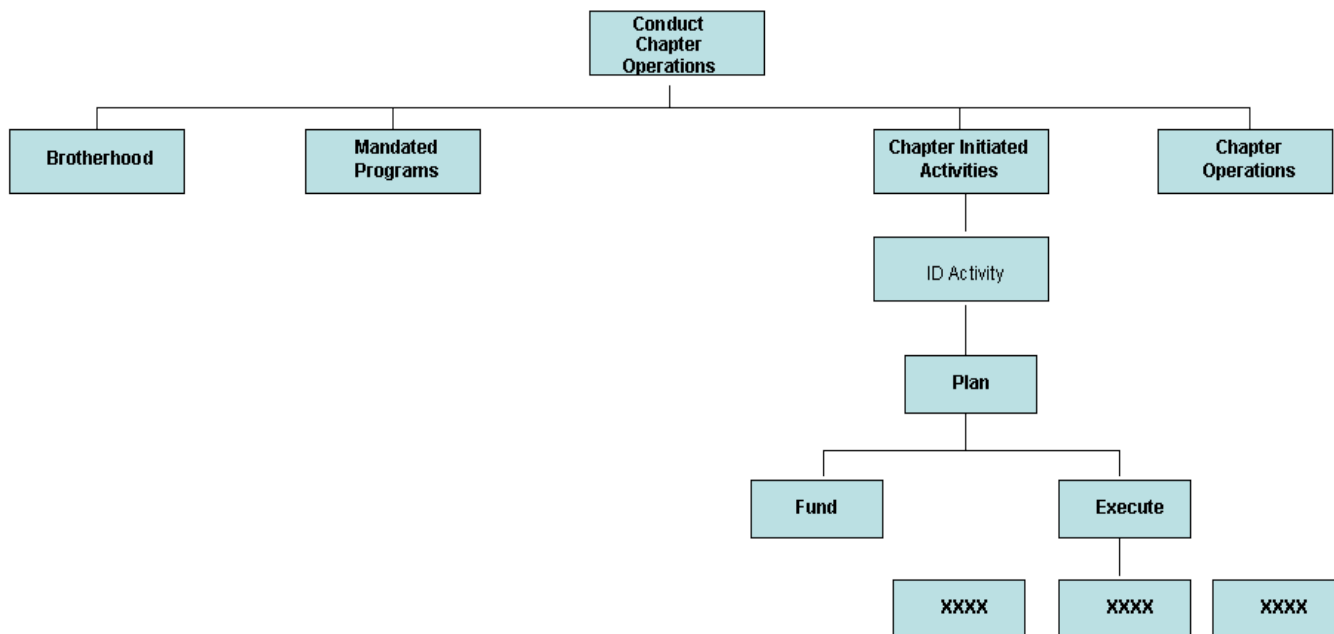


This activity model is an illustrative example of the top level and supporting activities necessary to accomplish mandated programs. The committees will appropriately develop individual models iaw the tasks needed to support the International and District mandates, as well as goals and objectives of the OFYPP.

***Strategic Planning Guidance 2008 - 2013***  
**Pi Lambda Lambda Chapter - Omega Psi Phi Fraternity, Inc.**

**Appendix C**

***Sample Activity Model (Non-mandated programs)***



This activity model is an illustrative example of the top level and supporting activities necessary to accomplish chapter initiated programs mission. The committees will develop objectives support the Chapter goals and will develop individual activity models iaw applicable tasks needed to meet committee objectives. The individual program activity models will be reflected in appropriate appendices to the Strategic Plan, e.g., Scholarship, Social Action, etc.



***Strategic Planning Guidance 2008 - 2013***  
**Pi Lambda Lambda Chapter - Omega Psi Phi Fraternity, Inc.**

**Appendix ???**

**Five Year Calendar**

When completed this will be a spreadsheet depicting major chapter events (definitive and proposed) of over the next five years. Each event must be linked to a specific objective and goal.

**PLL STANDING COMMITTEE LIST**

1. Achievement Week
2. Reclamation and Retention
3. Scholarship and National Essay Contest
4. Social Actions
5. Talent Hunt
6. Memorial Service
7. Social
8. Gene Bryson Retreat
9. Nominations
10. Strategic Planning
11. Membership and Selection Process
12. Relay For Life
13. Automation
14. Community Development Corp
15. Health Initiatives
16. Education and Training
17. Budget and Finance
18. Bike Fest
19. Golf Tournament
20. (NEW) Ways and Means
21. Diabetes Walk & Campaign
22. Que Party
23. Chapter Achieves & Artifacts
24. Constitution and By-Laws (Tribunal)
25. Community Relations (includes Pan Hellenic Relations)

***Strategic Planning Guidance 2008 - 2013***  
**Pi Lambda Lambda Chapter - Omega Psi Phi Fraternity, Inc.**

**COMMITTEE GOALS AND OBJECTIVES**

1. **ACHIEVEMENT WEEK:** The mission of the International Achievement Week Committee is to ensure that Achievement Week is observed in November of each year and is designed to seek out and give due recognition to those individuals at the local and international levels who have made a noteworthy contribution toward improving the quality of life for Black Americans. A High School Essay Contest is to be held in conjunction with Achievement Week. The contest is open to all college-bound high school seniors.

**Goals**

- To increase interest, enthusiasm, and accountability at the Chapter and District level in support of the National Essay Contest; Provide scholarships to winners publicly and timely; To implement the revised uniform Fraternity-wide minimum criteria (Form 77) for awards; To disseminate information to all Chapters and Districts concerning current requirements and submission timelines for all major International Achievement Week awards.

**Objectives**

- Assist in the establishment of a National Essay Theme consistent with the ideals of the fraternity; Recognize brothers and citizens who have made a significant contribution to their respective communities and/or the fraternity; To ensure established selection criteria and rules are upheld during the selection process for all who are in competition.

2. **RECLAMATION & RETENTION COMMITTEE:** Works to develop programs and strategies to reclaim un-financial Brothers and develop programs and strategies to retention active financial Brothers in the fold. This committee also works to retain Brothers so that we won't have to Reclaim or Recruit them.

**Goals**

- Develop and maintain an active Reclamation and Retention Committee that strives for a lifelong involvement of Brothers in efforts to be in the service of our fraternity, family and community; To reclaim our un-financial Brothers is one of the greatest challenges we face. Vital growth of the fraternity is in the hands of our inactive Brothers; To maintain a minimum of 90% retention rate of chapter members; Improve chapter retention, reclamation, recruitment and rededication to Omega Psi Phi.

***Strategic Planning Guidance 2008 - 2013***  
**Pi Lambda Lambda Chapter - Omega Psi Phi Fraternity, Inc.**

**Objectives**

- Develop a strategic marketing plan to reach out to our wayward Brothers with compelling reasons why they should be financial and actively involved in Omega's worthwhile programs and efforts to be a positive force in the live of Black Americans; Develop a model that is current, not relying on pass data, but to develop a strategy that mirrors efforts of other successful membership organizations; Encourage greater participation in meetings that allow Brothers better communications with concentrated efforts toward fellowship, information dissemination, and well-organized execution of fraternity business while at the meetings.

3. **SCHOLARSHIP AND NATIONAL ESSAY CONTEST:** For National Essay Contest – see Achievement Week Committee above in #1. Our Founders recognized the importance of the intellect in all matters pertaining to the advancement of humankind. Scholarship is an integral and deep-rooted component of our organization. Every member is dedicated to scholarship. IHQ promotes the Charles R. Drew Scholarship throughout the Fraternity.

**Goals**

- To encourage high scholastic attainment at the International, District and Chapter levels; To increase awareness and the importance of scholarship; To encourage meaningful research and creative productivity among all Americans without regard to race, sex, creed or Greek-letter affiliation.

**Objectives**

- Revise the scholarship brochure to clarify the purpose of each scholarship and its eligibility criteria; Increase the requirements for each scholarship to enhance the quality of applicants and the value of scholarship; To increase the number of scholarships; To seek sponsorship and/or external funding for scholarships, especially the Charles R. Drew Scholarship.

***Strategic Planning Guidance 2008 - 2013***  
**Pi Lambda Lambda Chapter - Omega Psi Phi Fraternity, Inc.**

4. **SOCIAL ACTIONS COMMITTEE:** Designed to create mechanisms and processes for promotion of the Service portion of Omega throughout the fraternity; Insure all chapter activities are aware of and understand the fraternity's Social Action thrust; To occupy a progressive, helpful and constructive place in the civic and political life of the community and of the nation; To ensure that Omega leads the way in relieving the onslaught of poverty and low attainment of our African-American males. The Social Action Committee shall develop programs and activities that embraces social issues.

**Goals**

- To stem the tide of grim statistics as it relates to African-American males; To enable Omega to be recognized as the leading proponent for uplifting and development of the African-American male through our programs; To ensure that the Brotherhood truly takes to heart that "unselfish living is a rare and precious gem to be sought by all mankind".

**Objectives**

- To partner with the American Cancer Society in the Relay for Life Program and the American Diabetes Association to raise awareness and funds for these programs; To continue our efforts and chapter submittals in the Social Actions chapter of the Year portfolios; Understand the Social Actions Recognition Criteria and scoring system.

5. **TALENT HUNT COMMITTEE:** To establish a program which provides exposure, encouragement and financial assistance to talented young people participating in the performing arts where winners of the competition are awarded recognition for their talents.

**Goals**

- Provide leadership to our youth by serving as role models. Provide recognition in the form of monetary awards and/or scholarship to talented youth; To provide consistency in the process used to identify gifted and talented students in the visual and performing arts; To establish "Battle Books for Talent Hunts" that are reviewed annually for execution.

***Strategic Planning Guidance 2008 - 2013***  
**Pi Lambda Lambda Chapter - Omega Psi Phi Fraternity, Inc.**

**Objectives**

- Ensure that Talent Hunt Demonstrations are conducted in locations that are designed for performing arts. Locations must be equipped with the appropriate audio/sound system and piano; Ensure professional taping/recording of Talent Hunt Demonstrations.

6. **MEMORIAL SERVICE COMMITTEE:** The Memorial Committee shall be responsible for conducting an annual memorial service to remember deceased Brothers. The committee shall also be responsible for assisting in any amenities and expressions of sympathy to recently departed Brothers of this chapter.

**Goals**

- To show Omega's appreciation and remembrance of the loyal sons of Omega.

**Objectives**

- To provide public recognition of a departed Brother; Meet requirements of an International Mandated Program; and show appreciation for the families of the membership.

7. **SOCIAL COMMITTEE:** The Social Committee shall consider each year as a minimum, the following activities: (1) An outing with the wives and sweethearts, (2) a cookout, and (3) a Christmas Party. The Social Committee shall also consider activities that encourage Brotherhood and Fellowship.

**Goals**

- To identify ventures and/or business that are willing to partner with Pi Lambda Lambda Chapter for entertainment, food service or activities that encourage friendship, fellowship and family.

**Objectives**

- To provide activities that encourage friendship, fellowship and family.

***Strategic Planning Guidance 2008 - 2013***  
**Pi Lambda Lambda Chapter - Omega Psi Phi Fraternity, Inc.**

8. GENE BRYSON RETREAT COMMITTEE: To develop the tools and skills to examine and express the concerns regarding the chapter, community or the church. To bring chapter members together to learn and share practical solutions that will empower us to help contribute to the betterment of our communities through service by the chapter.

**Goals**

- It is the challenge of this committee to make fraternity life better for the members of this chapter; Acquire the knowledge, understanding and skills that permit member participation as active and viable contributing chapter members.

**Objectives**

- Acquire basic skills for obtaining chapter information, solving problems, thinking critically and communicating effectively; Increase member participation; Training and education committee chairmen on their duties and responsibilities, as well as assign team members.

9. NOMINATIONS COMMITTEE: The elected officers of this Chapter shall be: Basileus, Vice Basileus, Keeper of Records and Seal, Assistant Keeper of Records and Seal, Keeper of Finance, Assistant Keeper of Finance, Chapter Reporter, Chaplain, Keeper of Peace, and the Immediate Past Basileus. This committee will develop a slate of officer to be presented to the body for elections.

**Goals**

- Provide the membership a reasonable slate of electable officers.

**Objectives**

- Review available candidates, screen requirements and eligibilities and develop a chapter slate of officers.

***Strategic Planning Guidance 2008 - 2013***  
**Pi Lambda Lambda Chapter - Omega Psi Phi Fraternity, Inc.**

10. STRATEGIC PLANNING COMMITTEE: To develop the Pi Lambda Lambda Strategic Planning Guidance addressing the five year chapter vision; Ensure the PLL SPG is synchronized with district and international guidance; Ensure the PLL SPG is sufficiently collaborated with appropriate chapter committees; Conduct the annual assessment of the PLL SPG; As appropriate, present the PLL SPG or annual assessment to the chapter for review and approval on an annual bases.

**Goals**

- Establish a strategic plan, set up milestones and track progress using a Chapter Strategic Management Team. Select a Chapter Chairman, Strategic Planning Committee and provide him sufficient team members to manage chapter activities....

**Objectives**

- To track, manage and report on the progress of the Strategic Planning Guidance; To monitor the Budget which established guidelines for funding chapter activities; Ensure that “good ideas” are vetted with the Executive Council and Budget Committee and the Body prior to any acting being implemented.

11. MEMBERSHIP AND SELECTION PROCESS COMMITTEE: This chapter shall consider and select new members for initiation into the Fraternity in accordance with the Fraternity’s current membership directives, policies and procedures. Newly initiated fraternity members shall be given an orientation and training that is in accordance with the Fraternity’s current membership directives, policies and procedures.

**Goals**

- Ensure that all potential members come well recommended by financial Brothers that will vouch for them and agree to train and educate them; Ensure Chapter complies with the guidelines of the New Lampados Program; Ensure that a Post Initiation Program is regimented, documented and trained chapter members are available to assist the mentors with the education phase for new members.

***Strategic Planning Guidance 2008 - 2013***  
**Pi Lambda Lambda Chapter - Omega Psi Phi Fraternity, Inc.**

**Objectives**

- Bring new members in through the MSP (New Lampados Program) so that they are properly educated and trained in the traditions of Omega.

12. RELAY FOR LIFE COMMITTEE: This committee works in direct connections with or subcommittee of the Social Actions Committee to address chapter donations to eliminate and find a cure the illness and diseases associated with cancer.

**Goals**

- Lead the Chapter's efforts to raise funds and provide activities to support the community's Relay for Life events normally held the third weekend of May near the Forest Park High School Activity Field.

**Objectives**

- Provide a Chapter Fellowship Activity that involves the fraternity family, members and friends with a primary goal of raising money for the relay efforts.

13. AUTOMATION COMMITTEE: The Automation Committee shall develop media that provide avenues of communications to bridge Brotherhood and Fellowship. This committee will manage and present chapter concerns on the chapter's website and submit budgetary requirement to support this requirement.

**Goals**

- Develop a user friendly media that can be accessed remotely by chapter members.

**Objectives**

- Provide 24 hours access to chapter data that is informative, accurate and current; Provide a pictorial history of chapter events; Develop a chapter roster that is On-line and password-protected to cover private data.



***Strategic Planning Guidance 2008 - 2013***  
**Pi Lambda Lambda Chapter - Omega Psi Phi Fraternity, Inc.**

**14. COMMUNITY DEVELOPMENT AND CORPORATE RELATIONS**

**COMMITTEE:** The Community Development and Corporate Relations Committee serves as a tool to Uplift Brotherhood and Fellowship while serving the community through promotion of greater consciousness of civic and social causes important to our community; and the initiation and implementation of programs highlighting the great talents, leadership, and positive work of those within our respective counties.

**Goals**

- To provide each chapter entity with vital information necessary to make a difference to those who are underserved; To develop an image for all work that is performed by the membership to assist the Fraternity leadership when approaching Non-Governmental Organizations and other civic oriented organizations concerning potential partnerships; To shine a positive light onto the great accomplishments of our outstanding members who give selflessly to support the aims of Omega.

**Objectives**

- To develop Chapter media release kits that can be utilized to promote the cause of Omega and the work done at each level of the chapter. This will help, aid and assist with the “branding” of the chapter and present a progressive and positive image to the greater Prince William and Stafford Counties; Bring greater participation in mentoring programs and communities activities; Develop better management tools that lead to great comprehension and understanding of Omega Psi Phi Fraternity.

**15. HEALTH INITIATIVES COMMITTEE:** To facilitate Healthcare awareness and participation in the African-American community through collaborative services, education, screening and community involvement.

**Goals**

- To be a positive force in our community to better health education, screening for those diseases that are more common in the African-American community and various initiatives.

***Strategic Planning Guidance 2008 - 2013***  
**Pi Lambda Lambda Chapter - Omega Psi Phi Fraternity, Inc.**

**Objectives**

- To keep the Brotherhood abreast of health issues that can impact our lives and to provide education, information and screening data available; To plan and facilitate Health Fairs for our community.

**16. EDUCATION AND TRAINING COMMITTEE:** To ensure that Omega history as well as accomplishments are recorded so that the Brotherhood and the will be made aware of Omega's significant positive impacts in advancing mankind in general, and making a difference in the lives of African-Americans in particular. Newly initiated fraternity members shall be given an orientation and training that is in accordance with the Fraternity's current membership directives, policies and procedures.

**Goals**

- To ensure that the Brotherhood is aware of Pi Lambda Lambda Chapter's history and the history of Omega Psi Phi Fraternity so that we can energize, excite, enlighten and inspire our membership to even greater heights; Work in conjunction with the "History Committee" to brighten the lights of Omega.

**Objectives**

- Ensure that all members of Pi Lambda Lambda Chapter are comfortably equipped with a solid traditional and educational base of Omega History and Customs; Provide chapter member with chapter history and traditions; and ensure that fellowship and friendship are well rooted in all chapter activities.

**17. BUDGET AND FINANCE COMMITTEE:** To develop, establish and implement an operating budget to enable the chapter to function and conduct fraternity business and activities through sound fiscal operating procedures.

**Goals**

- Work closely with the Keeper of Finance and the Executive Committee in determining finances and activities from traditional and current perspectives; To implement the budget for the upcoming fraternal year.

***Strategic Planning Guidance 2008 - 2013***  
**Pi Lambda Lambda Chapter - Omega Psi Phi Fraternity, Inc.**

**Objectives**

- To develop a working DRAFT Budget document for the upcoming year in coordination with the Executive Council and the Chapter.

18. BIKE FEST COMMITTEE: To develop and provide a form for a collaborative bond between Brothers at the chapter, district and national level that focuses on strengthening Brotherhood and Fellowship.

**Goals**

- Provide a forum for better and open communications and fellowship; Allow the chapter to enter into a business partnership with local businesses in the community while stimulating the local economy; Building bridges for Corporate Sponsorship Programs; Improve communications throughout the District.

**Objectives**

- To bring Omega Ryders together in the spirit of friendship and cooperation to develop safe riding skills and raise money.

19. GOLF TOURNAMENT COMMITTEE: To develop and provide a form for a collaborative bond between Brothers at the chapter, district and national level that focuses on strengthening Brotherhood and Fellowship.

**Goals**

- Provide a forum for better and open communications and fellowship; Allow the chapter to enter into a business partnership with local businesses in the community while stimulating the local economy; Building bridges for Corporate Sponsorship Programs; Improve communications throughout the District.

**Objectives**

- To increase communications within the chapter; Raise money for scholarships; Encourage Brothers to participate in healthy/competitive outdoor sports.

***Strategic Planning Guidance 2008 - 2013***  
**Pi Lambda Lambda Chapter - Omega Psi Phi Fraternity, Inc.**

20. (NEW) WAYS AND MEANS COMMITTEE: In coordination with the Keeper of Finance and the Budget and Finance Committee, this committee shall be responsible for the construction of the chapter budget and input for financial needs of each committee in support of annual activities.

**Goals**

- To investigate and recommend such business opportunities and practices as would improve the fiscal and financial status of the chapter and its members per the committee constitutional charge.

**Objectives**

- To identify reasonable ways and means to raise funds to support chapter events.

21. DIABETES WALK & CAMPAIGN COMMITTEE: This committee works in direct connections with or subcommittee of the Social Actions Committee to address chapter donations to eliminate and find a cure the illness and diseases associated with cancer.

**Goals**

- Lead the Chapter's efforts to raise funds and provide activities to support the community's Diabetes Walk events. normally held during the second or third weekend of October.

**Objectives**

- Provide a Chapter Fellowship Activity that involves the fraternity family, members and friends with a primary goal of raising money for the relay efforts.

22. QUE PARTY COMMITTEE: To

**Goals**

- To foster a spirit of cooperation and friendship among community members, families and friends of Omega.

**Objectives**

- To make money to support chapter requirements and activities.

***Strategic Planning Guidance 2008 - 2013***  
**Pi Lambda Lambda Chapter - Omega Psi Phi Fraternity, Inc.**

23. CHAPTER ACHIEVES & ARTIFACTS COMMITTEE: To ensure that artifacts and memorabilia (Chapter Certificates, Plaques, Banners and Trophies), when collected, shall be carefully preserved, and, if necessary, restored and they shall be displayed as the Committee so directs at chapter events, activities of community functions. The Committee shall promote these efforts and involvements of Omega Men to foster greater emphasis on the preservation of Fraternity Artifacts by exhibiting collected items. This Committee will also focus on encouraging Brothers and their survivors to donate to the Fraternity, for preservation and display, such artifacts and memorabilia as they, in their generosity, may wish the Fraternity to have and keep.

**Goals**

- Work in conjunction with the International Headquarters to make the John Williams Museum one of the best Black Historic Museum in the country by continuing rare and exquisite item collections; To produce a chapter Brochure that explores and shares the success of the Pi Lambda Lambda Chapter in the Prince Williams and Stafford County footprint.

**Objectives**

- To maintain accountability and control of all chapter artifacts and memobilia.

24. CONSTITUTION AND BY-LAWS (TRIBUNAL) COMMITTEE: To develop and maintain current Constitution and By-Laws, and facilitate the Chapter's effort in accordance with guidelines established by the Fraternity's efforts to help the Brotherhood become more aware of provisions contained in the document.

**Goals**

- To perform comprehensive reviews of the Constitution and By-Laws of the Fraternity and make recommendations necessary to enhance the use and effectiveness of both documents; To work with the Rules Committee to review and make necessary modifications to Fraternity's Policies and Procedures Manual.

***Strategic Planning Guidance 2008 - 2013***  
**Pi Lambda Lambda Chapter - Omega Psi Phi Fraternity, Inc.**

**Objectives**

- To comply with the duties defined in the Constitution and By-Laws; To codify outstanding recommendations of the body; Work with the Rules Committee to review and make necessary modifications to the Fraternity's Policies and Procedures Manual.

**25. COMMUNITY RELATIONS (INCLUDES NATIONAL PAN HELLENIC RELATIONS) COMMITTEE:** To develop and maintain current corporate partners, while attempting to increase their participation with the fraternity; and foster better relations between NPHC organization and their projects.

**Goals**

- Develop activities and interest with the corporate and business community through information packets and souvenir books that encourage corporate relationships with the chapter and the fraternity; Develop a marketing strategy for success.

**Objectives**

- Establish and maintain contacts with local agencies, industry and business that support the goals and objectives of Pi Lambda Lambda Chapter of Omega Psi Phi Fraternity, INC; Identify strategies for success in the corporate world for better community relations and opportunities for Brothers to invest and reinvest in the fraternity and develop partnerships among the men of Omega.

***Strategic Planning Guidance 2008 - 2013***  
**Pi Lambda Lambda Chapter - Omega Psi Phi Fraternity, Inc.**

**MANDATED PROGRAMS**

***Strategic Planning Guidance 2008 - 2013***  
**Pi Lambda Lambda Chapter - Omega Psi Phi Fraternity, Inc.**

**STANDING COMMITTEE PLANNING TASKS**

- Develop objectives and milestones to accomplish chapter goals
- Develop a Plan of Action to accomplish chapter goals
- Identify critical resources necessary to accomplish chapter goals
- Identify budget and finance requirements to accomplish chapter goals
- Align chapter members to execute the Plan of Action (Volunteers welcome!!!)

**CRITICAL CHAPTER BUILDING BLOCKS**

- Strategic Planning Committee
- Budget and Finance Committee
- Social Committee
- Social Actions Committee

**PLL VISION STATEMENT**

**OMEGA MEN BOUND BY THE CARDINAL PRINCIPLES  
AND ENTRENCHED IN PRINCE WILLIAM / STAFFORD  
COUNTIES REACHING OUT AND PROVIDING  
SERVICES TO UPLIFT MEN AND THE COMMUNITY.**

**LINKAGE TO VISION STATEMENT**

***Strategic Planning Guidance 2008 - 2013***  
**Pi Lambda Lambda Chapter - Omega Psi Phi Fraternity, Inc.**



***Strategic Planning Guidance 2008 - 2013***  
**Pi Lambda Lambda Chapter - Omega Psi Phi Fraternity, Inc.**

When PLL was started...

- Create chapter to retain/reclaim Omega Men
- Work with Prince William to provide services to assist the community
- Connectivity with District and International Headquarters
- Expand to include Stafford County...Manassas and Manassas Park

(How do you define Greater Prince William County???)

Implied Task: Growth through service to young men and Brothers (Mentoring)

**RETREAT ITEMS OF CONCERN LEADING TO CHAPTER GOALS**

1. Put a number on the number of Brother to reclaim – Reclamation
2. Challenge voting credentials and qualifications at District level
3. Remain the standard bearer for 3<sup>rd</sup> District & Omega Men
4. ***Chapter growth*** to 250 Omega Men in next five years...we current have about 115 Active Brothers.
  - Financial and Active
  - 30% attendance at meeting (75 Brothers)
  - 24% for a quorum (minimum) (60 Brothers)
5. Develop viable programs that encourage member participation
6. Presence and influence at District and International levels

**FIVE YEAR GOALS LINKED TO VISION**

1. Provide ***scholarship assistance to a graduating senior for four years***
  - Full ride by the end of five years
  - Partial scholarship for four years
  - More scholarships
  - Better legacy scholarship effort
2. ***Provide more scholarships to African American males***
3. Educate Brothers to the difference between George M. Hampton Foundation and Chapter responsibilities and/or obligations...

***Strategic Planning Guidance 2008 - 2013***  
**Pi Lambda Lambda Chapter - Omega Psi Phi Fraternity, Inc.**

4. ***Refocus scholarship criteria for PLL***
5. Scholarship banquet to present scholarships and certificates to recipients.
6. Legacy scholarship – Increase chapter gift to our children
7. Percentage increase on chapter revenues
8. Get a ***chapter house***
9. ***Get chapter shirts for Brothers as part of chapter dues – this is a chapter gift and privilege of membership***
  - Develop and obtain some Road Trip attire
  - Part of chapter dues
  - Break out and define what chapter dues pay for...
10. Increase community service
11. ***Become a major player in Omega player in the Omega Centennial Celebration in Washington, D.C. in 2011***
12. ***PLL's 10 year Anniversary Celebration***
13. ***Collaboration with area/local chapters***
14. ***Host a District Meeting or Conference***
15. Develop an Education and Training Team that results in elevation to District and International level offices
16. ***Add Mentoring Program***
17. ***“Develop an Omega Gents Program and Activities”...like the Delta's Jabbawalk***
18. ***Increase visibility within community – better marketing strategies***

***Strategic Planning Guidance 2008 - 2013***  
**Pi Lambda Lambda Chapter - Omega Psi Phi Fraternity, Inc.**

19. Develop a Public Relations Team
20. ***Increase Chapter participation in all activities***
21. Establish an Investment Club
22. Establish a Strategic Planning Committee – make it a functional committee
23. ***Adopt a Middle School***
24. Active voter registration program – getting out the vote
25. Join N.A.A.C.P. (Members)... We have a Chapter Life Membership
26. PLL Members acquire a political office in the community
27. ***Increase corporate sponsorship for PLL Chapter activities (Talent Hunt)... Comcast? Coca-Cola? Car Industries?***
28. ***What is our image or the image we want to project? What do people see when they see us coming?***
29. ***Policing each other...***

**GOAL LINKAGE TO PLL STANDING COMMITTEE LIST**

The task to the attending Brothers was to link the goals to the best PLL Standing Committee to develop milestones and tasks to

**Group 1: The Fearless Ones**

**(Randy Davenport, Tony Fields, Stevenson Bolden, Michael White, Michael Parker, Calvin Cherry & Michael Brown)**

***Strategic Planning Guidance 2008 - 2013***  
**Pi Lambda Lambda Chapter - Omega Psi Phi Fraternity, Inc.**

**1. *Establish 250 financial active members***

- Every chapter member reclaim one brother as a personal goal.

**All brothers must take responsibility for this action...and bring a Brother to the meeting with you...and get him financial**

- 100% Financial Brothers
- Implement a robust MSP; seek out men with like attainment/ideals and cross more quality brothers.  
**MSP committee and all brothers.**
- Establish post MSP program to continue grooming/mentoring new brothers to ensure retention.  
**MSP Chairman, MSP committee, all brothers**
- Establish Chaplain call initiative; brothers led by the chaplain routinely (i.e. monthly) call brothers who are missing in action to assess their needs and to bring them back into the fold. The same concept as an outreach ministry.  
**Chaplain and his committee.**

-Establish a benevolent fund to help brothers pay for their dues who are short of money **Office of Primary Responsibility: ??**

**2. Refocus PLL scholarship criteria.**  
**Scholarship Committee**

- Provide scholarship assistance for 4 years to graduating senior
- Provide more scholarships to African American males
- differentiate between foundation and PLL to bridge gaps in program

- 3. Implement scholarship banquet to present scholarship and certificate to recipients.**
- Designate scholarship committee to plan and execute.

***Strategic Planning Guidance 2008 - 2013***  
**Pi Lambda Lambda Chapter - Omega Psi Phi Fraternity, Inc.**

4. Increase percentage in chapter revenue

- Establish a ways and means committee whose primary purpose is to seek ways to make money for the chapter. Find a motivated brothers who gets a "rush" from making money for chapter.

**Basileus to appoint Chairman.**

5. Obtain a Chapter Frat House

- Executive Committee review previous study and evaluate the pros and cons. Educate the body of the pros/cons. Appoint someone to review/research the matter further as necessary.

**Basileus and Executive Committee.**

6. Issue brothers chapter shirts as part of their dues.

-Designate KF to come up with a way to accomplish this and present to Executive committee and then to the body.

**Keeper of Finance**

**Group 2: The Master Minds**

**(Shaun Williams, Ambro Martin, Gregory Reid, Craig Truman, Derrick Harris & Al Woods**

1. Increase community service and tell our story better

- **Social Actions Committee**

2. Play a Major role in the Fraternity Centennial Celebration

- **Special Committee and/or Ways and Means Committee**
- **Select Committee members**

3. PLL's 10<sup>th</sup> Chapter Anniversary

- **Social Committee**

4. Collaborate with area/local chapters

- **Executive Committee and delegates to other meetings**

***Strategic Planning Guidance 2008 - 2013***  
**Pi Lambda Lambda Chapter - Omega Psi Phi Fraternity, Inc.**

5. Host District Conference or Meeting
  - **Executive Council (elected officers) – District/Chapter Marshal**
6. Develop bench strength (take on a leadership role)
  - **Strategic Planning Committee**
7. Mentorship Program
  - **Social Actions Committee**
8. “Omega Gents”
  - **Social Actions Committee**

**Group 3: The Life Blood Flow**  
**(Roger Hardy, Bernard V. Oliphant, James Long, Andrew McCall & Al Woods)**

**1. – Omega Gents** (This was also analyzed by Group 2).

Align with Mentoring Program that will fall under Social Action Committee. Event will also support Talent Hunt and Scholarship Program by potentially identifying participants.

Budget and Finance committee will need to plan for the cost of the program.

**2. – Increase visibility within community**

Align with the Automation committee. Recommend renaming the Automation committee to Public Relations committee and expanding their role to include media advertisements. This goal will align with # 16 to develop relationships within the community, local businesses, and other fraternity chapters.

Budget and finance will have a large role because as the automation committee role changes the budget and resources they receive will have to change also.

**3. – Develop Public Relations**

See # 2 in Group 3 above...

**4. – Increase chapter participation**

This goal will align with the Social committee and reclamation/retention committee. The two committees will have to work very closely together to develop programs that heighten current members interest and rekindle the interest of non-active Brothers.

***All committees will benefit from increased participation of the Brothers*** by having more active members one each committee and more participation at each event.

***Strategic Planning Guidance 2008 - 2013***  
**Pi Lambda Lambda Chapter - Omega Psi Phi Fraternity, Inc.**

**5. – Investment Club**

This goal will align with the education and training committee. We say this as an information session on how to better manage personal resources and if some Brothers were interested in starting an investment club, this would be an opportunity for them to meet and discuss. This goal was not seen as something that every Brother would be mandated to take part in.

**6. – Establish a strategic planning committee**

Committee already established. Recommend align with Gene Bryson Retreat committee. The present committee needs to make yearly updates and be held accountable for producing results.

**Group 4: The Dynamic Team**

**(Harvey Woodson, William Thompson, Crispin Abad, Bryon Cox, Leroy Mason, & Shelton Williams)**

1. Adopt A School
  - **Social Actions**
  - **Mentoring**
2. Active Voter Registration and Getting Out The Vote
  - **Social Actions**
3. Join NAACP (Each Member)
  - **Social Actions**
4. PLL Member to become more politically involved/hold community office
  - **Social Actions**
5. Corporate Sponsorship to PLL Activities
  - **Golf Tournament**
  - **Health Fair**
  - **Achievement Week**
  - **Talent Hunt**

***STRATEGIC PLANNING & RETREAT EXECUTION TEAM –***

***Art Sobers     [twftil@aol.com](mailto:twftil@aol.com) ;     Mike Parker, Sr.     [gmcol@aol.com](mailto:gmcol@aol.com)***  
***Bernard V. Oliphant     [bernard.oliphant@hqda-aoc.army.pentagon.mil](mailto:bernard.oliphant@hqda-aoc.army.pentagon.mil)***